

## CONVERGENCE ENGINEERING – IWI -71DL & 71CL



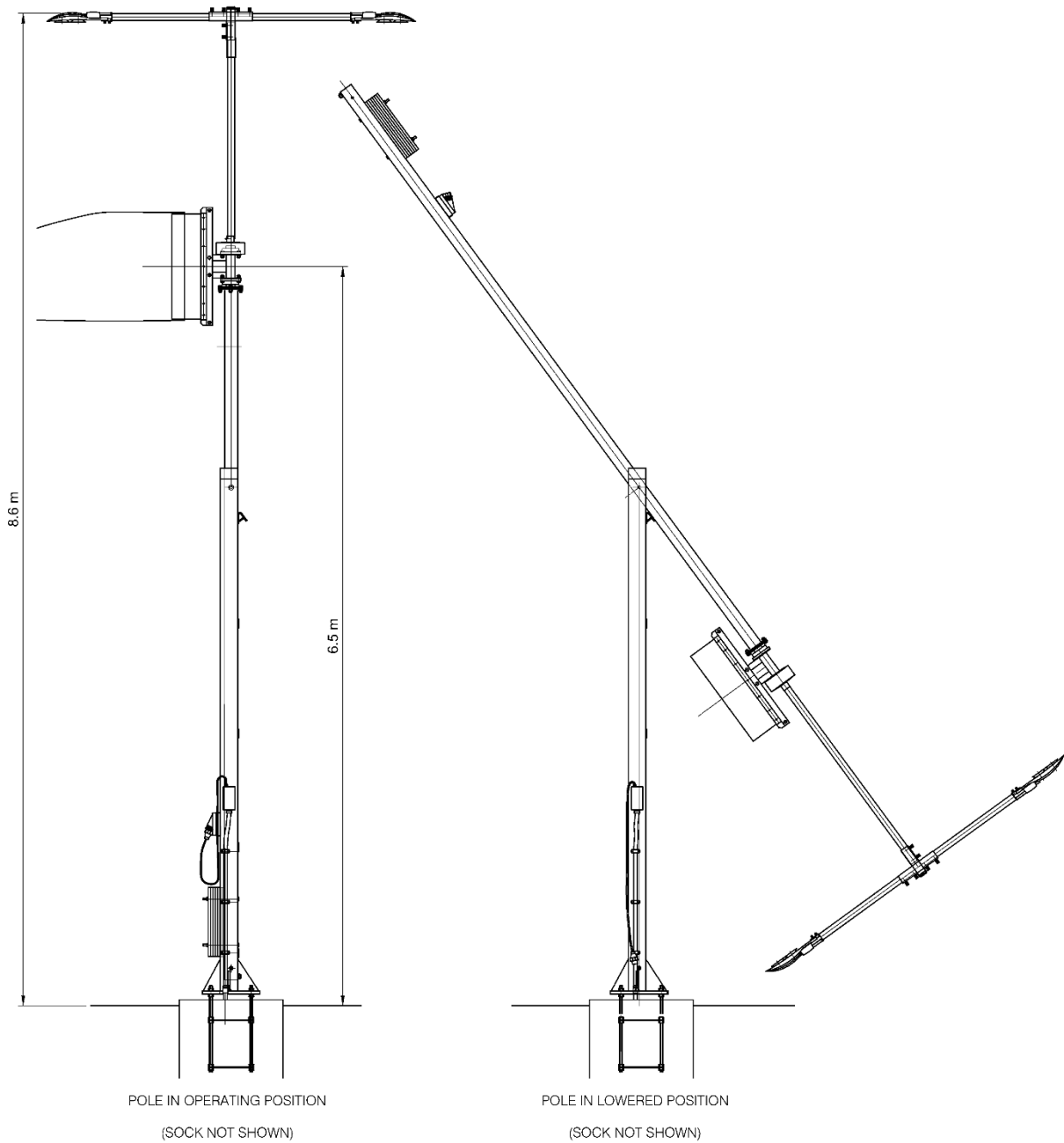
### KEY CONSIDERATIONS

- NATA tested & confirmed compliance with CASA MOS 139. Report No V180303/01
- Certified civil structural design for Wind Region D and Wind Region C Refer AS/NZS 1170.2.
- Hot dipped galvanized steel mast and cage bolts for enduring corrosion free service.
- Efficient and reliable LED lighting
- Options available for Mains supply, runway primary circuit connection and solar power.
- Australian designed and made with quality materials and workmanship.
- Equipment manufacturer support with spares and maintenance as required.

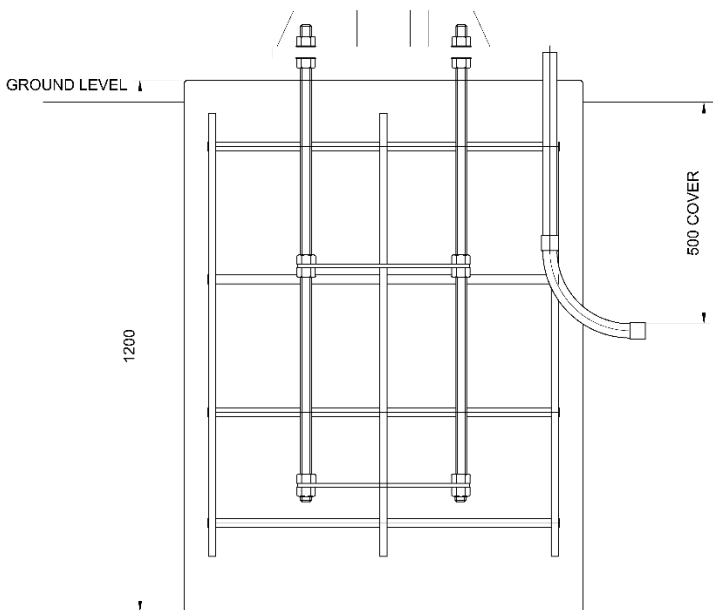
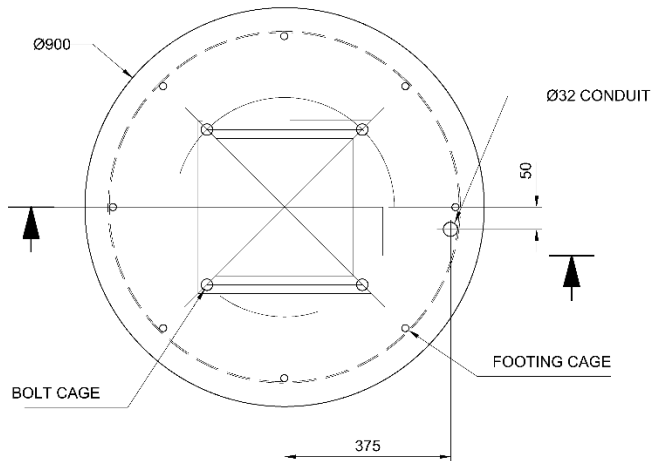


# TECHNICAL DETAILS

## GENERAL ARRANGEMENT



## STANDARD FOOTING OPTIONS



### KEY CONSIDERATIONS

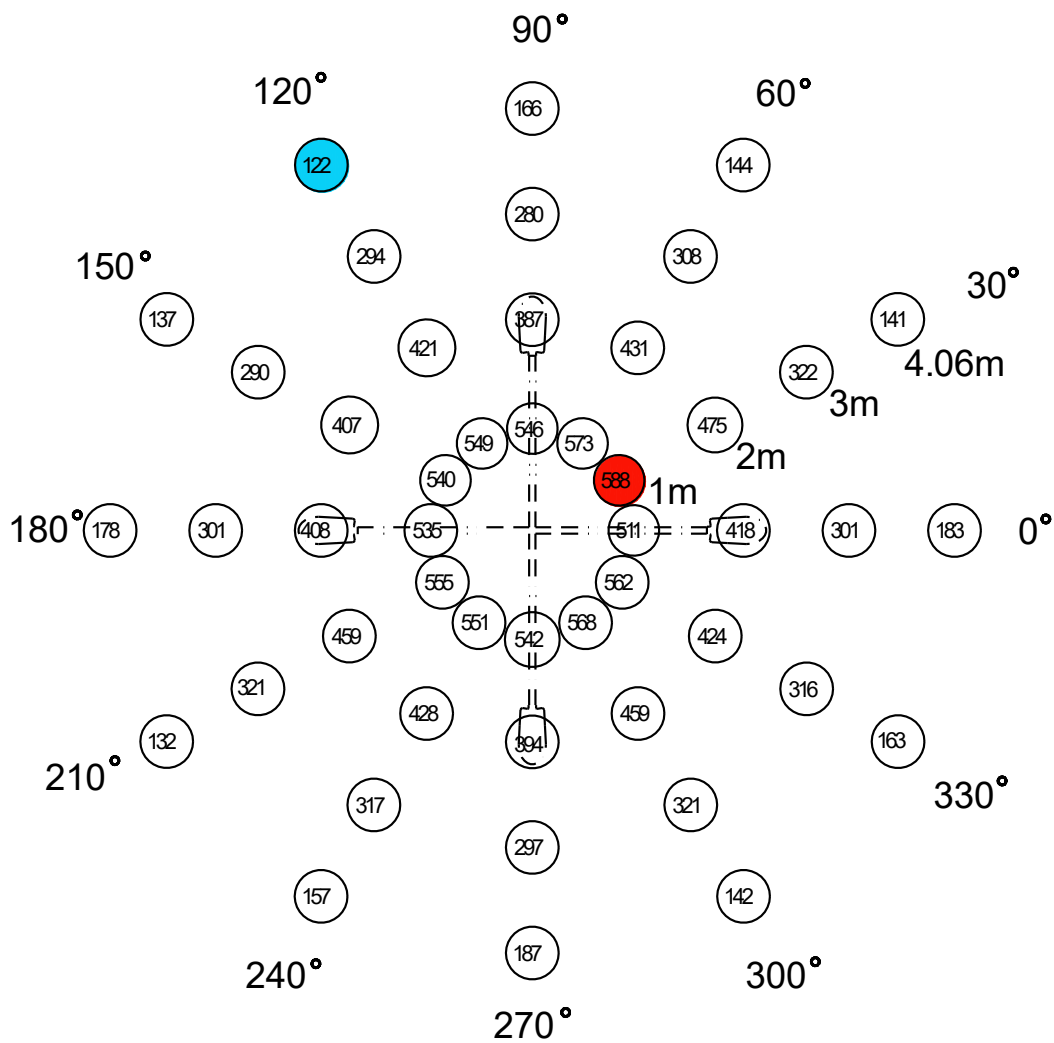
- Standard Cage and bolt sets are available for 3 different categories of soil and non-cyclonic wind regions Reference AS /NZS1170.2
- Certified civil structural design can be provided for Wind Region D and Wind Region C and where geotechnical information is required to determine soil conditions.
- Hot dipped galvanized steel cage bolt sets are provided for enduring corrosion free service.



## COMPLIANCE DETAILS

### COMPLIANCE TEST RESULTS

Measured Values (lux)



CASA MOS Requirement	Measured	Result
Minimum 100 lux	122	PASS
Maximum 600 lux	588	PASS

